

+34 634 74 91 60
+34 658 86 97 13



info@garantconsultingplus.com

House in Estepona

Reference: R4643602

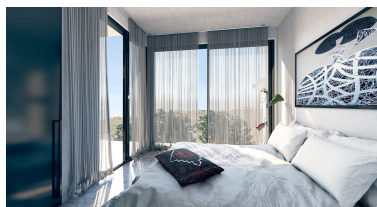


Bedrooms: 3
Status: Sale

Bathrooms: 2
Property Type: House

M²: 420
Parking places: by request

Price: 1,750,000 €
Printing day : 9th June 2026



Overview: Villa located in the heart of the Costa del Sol, just 8 minutes from the beach and 15 minutes from Marbella and Sotogrande, a dream place with enormous landscape wealth where numerous beaches are distributed between the mountains and the sea of El Castillo de la Duquesa, Manilva, Estepona, to Puerto Banús and Benahavis. Very close to the exclusive Valle Romano Golf & Resort and the Sotogrande Polo clubs. The special features of the project have made the most of the unbeatable conditions of the plot through an inverted house with a spectacularly designed pool. The special features of the project have made the most of the unbeatable conditions of the plot through an inverted house with a spectacularly designed pool. The house is made up of 3 floors: It is accessed by pedestrian and vehicle from a higher level of the plot, to an entrance patio where we find a fabulous wooden walkway that gives access to the interior of the house. Once inside, from the master bedroom you can see the magnitude of the back of the house and its evocative views of the mountains. With an unbeatable entrance of natural light and with the highest terrace in the house we will be in full contact with the nature that surrounds this enclave. The house is functionally connected vertically with an exclusively designed elevator and a staircase that recreates a totally unique vertical space. If we continue the journey one floor lower we will reach the double-height central area that is the heart of the home from where everything is understood and everything is visualized. Once here we finish understanding the magnitude of the design chosen for this villa, we find ourselves in front of a spectacular infinity pool, a pool that flies, with the sensation of seeing it floating in the air. Taking into account other more technical descriptive issues of the house, it has a total constructed area of 435 m² with porches and terraces. With the following distribution of uses by plants: Upper Access Floor: Entrance hall, the best place to appreciate the interior dimension of the home. The master bedroom and its terrace create the balcony with the best views of the outside of the house. Additionally, this floor has a full bathroom and a dressing room. Lower Noble Floor: The living room, dining room and kitchen create a completely open space that extends along its entire front towards a terrace of almost 30m² and the garden, where a swimming pool with a very unique design begins, flying above the ground. From the bedroom on this floor we can connect with the outside porch, a pergola space where we can enjoy the terrace and bathroom area. Basement floor: Gym & SPA, games room, wine cellar, laundry, and service areas. All property information presented is provided directly by the property owner. Marbella Homes to Love acts solely as an intermediary and cannot guarantee the accuracy or completeness of these details. We recommend that prospective buyers conduct due diligence to verify important information. Thank you for your understanding.

Features:

Pool, Air conditioning, Sea views, Mountain views, None, Private garden, Alarm system, Parking