

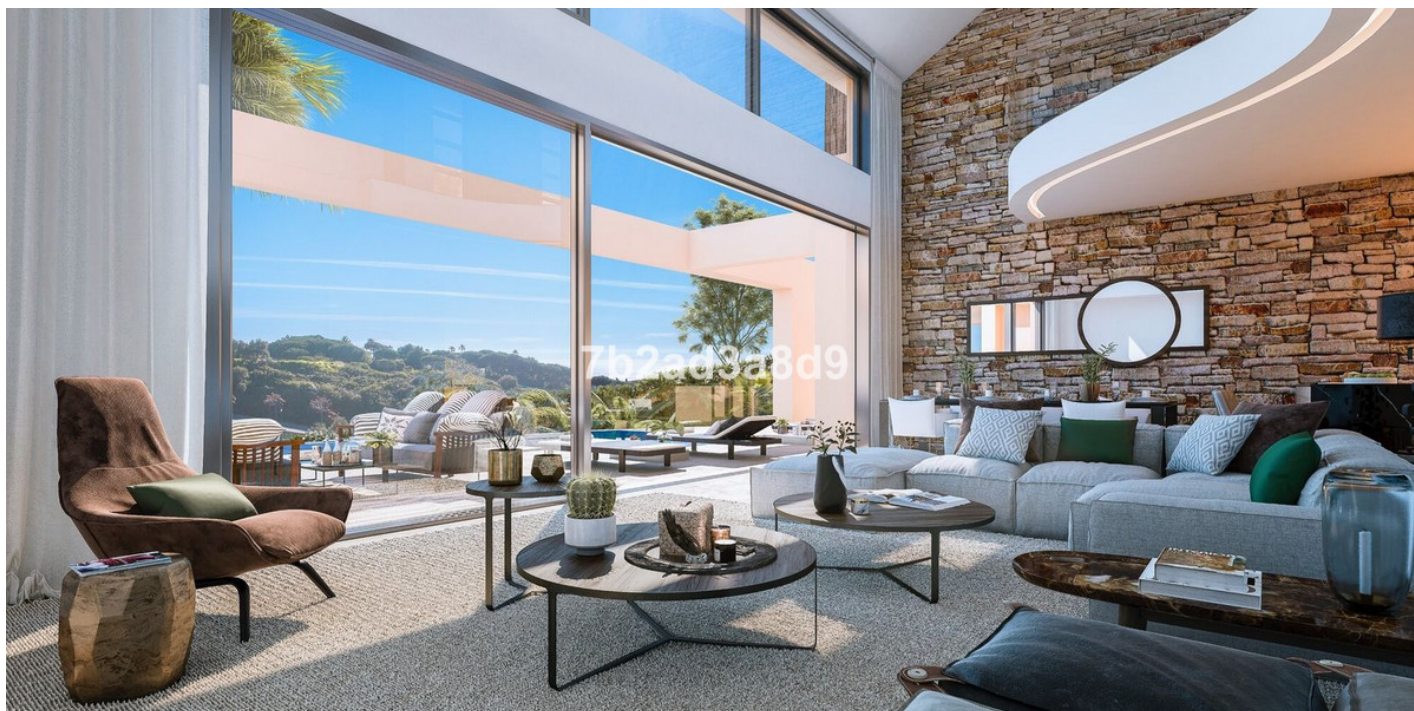
+34 634 74 91 60
+34 658 86 97 13



info@garantconsultingplus.com

Commercial in Elviria

Reference: R4068103



Bedrooms: by request

Bathrooms: by request

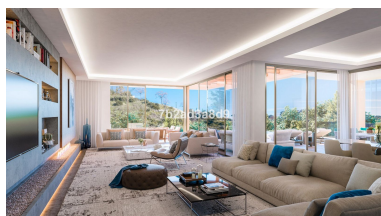
M²: 1,100

Price: 650,000 €

Status: Sale

Property Type: Commercial Parking places: by request

Printing day : 14th
September 2025



Overview: Each plot has a luxury villa project plan designed by well-known architects. Three of them have already been sold, and two have already begun construction. The enormous plot has been divided into seven distinct plots, each with its own official license, not a simple, and basic project that may be customized to meet the needs of the buyer. The beach and the center of Elviria are approximately 3-4 minutes away from this project. The vast plot views the gorgeous Mediterranean shoreline all the way down to Gibraltar due to its high elevation and southeast/southwest orientation. The property sizes range from 1,005 to 1,107 square meters, with built-up areas ranging from 294 to 329 square meters. Basements, terraces, and the number of bedrooms can all be expanded. Each villa is situated to provide optimum seclusion and views. If you want an even bigger residence, you can combine two plots. There are no limits to what you can do. The application for a building permit, as well as the basic project, has already been paid for. The executive project has yet to begin, and neither the architect nor the town hall have been paid.

Features:

None, Pool, Air conditioning, Heating, Sea views, Mountain views, None, Private garden, Parking, Luxury