

Commercial in Benahavís

Reference: R3473524



Bedrooms: by request

Bathrooms: by request

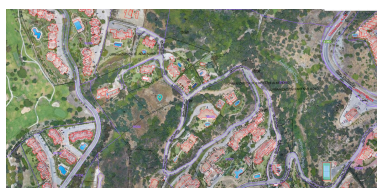
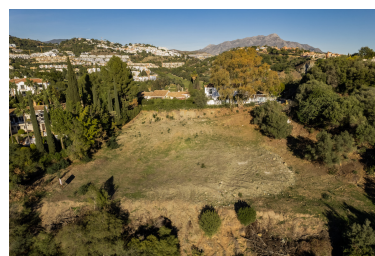
M<sup>2</sup>: 856

Price: 995,000 €

Status: Sale

Property Type: Commercial Parking places: by request

Printing day : 22nd June  
2026



---

Overview: Puerto del Almendro - Benahavis Flat plot situated in an ideal position for people who want the best of two worlds: peace, tranquility and panoramic views over the surrounding landscape with some sea view as well yet a very short distance away from amenities, San Pedro & Puerto Banus. The urbanization has barriers and camera at the entrance as well as a tennis court available to residents. The commercial centre of Monte Halcones is just around the corner and offers basic amenities such as supermarket, pharmacy, restaurants etc. Suitable for 2 floor + basement, villa project Alloted build percentage is 20% and minimum plot size is 3000m2 here We also have the adjacent plot for sale: R3984019

---

Features:

Sea views, Mountain views