

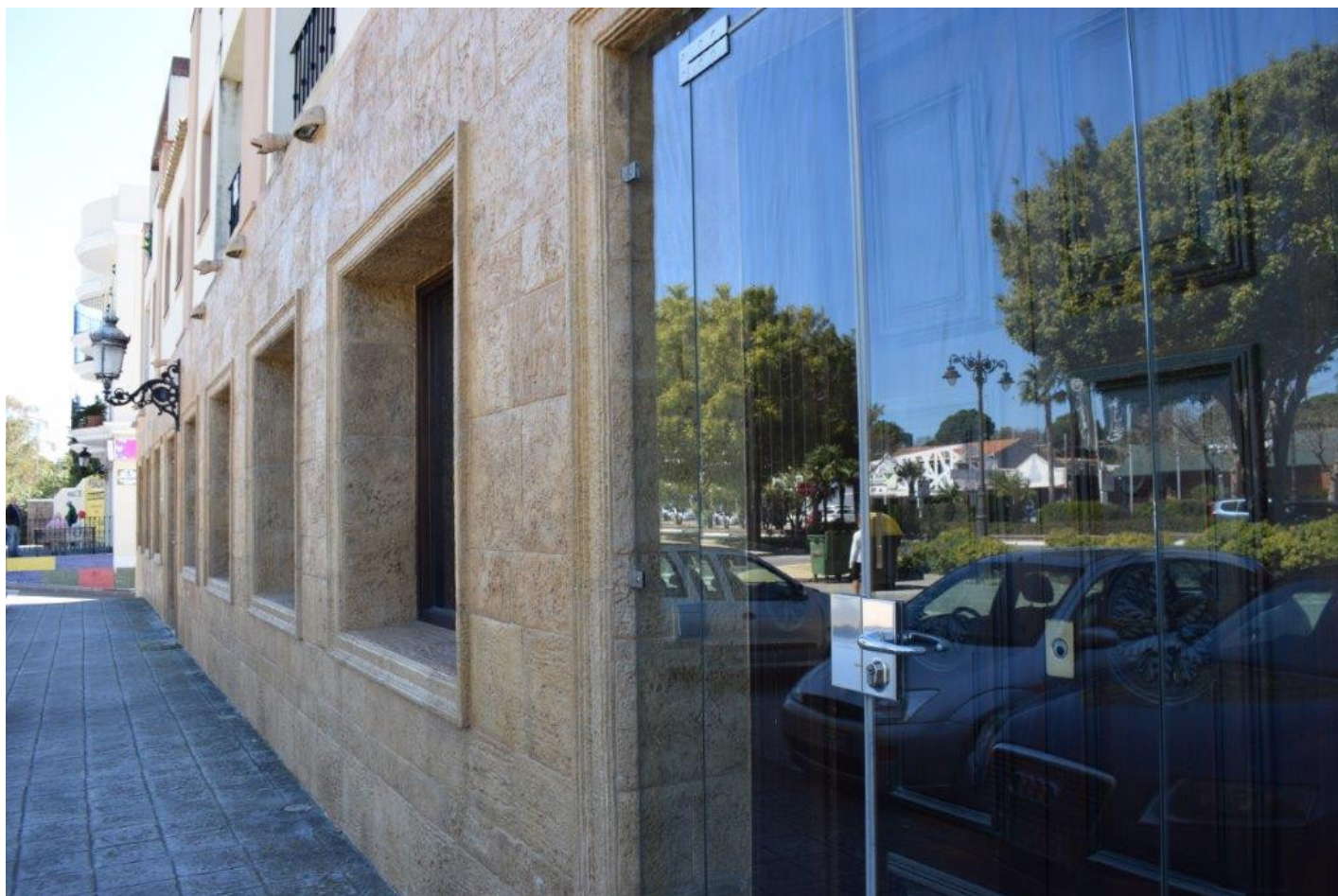
+34 634 74 91 60
+34 658 86 97 13



info@garantconsultingplus.com

Commercial in Estepona

Reference: R3144001

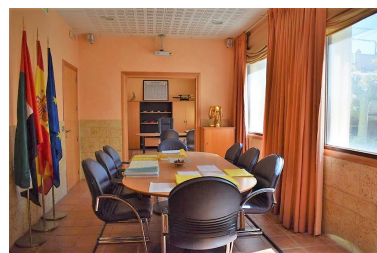
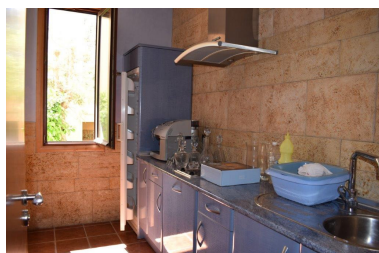
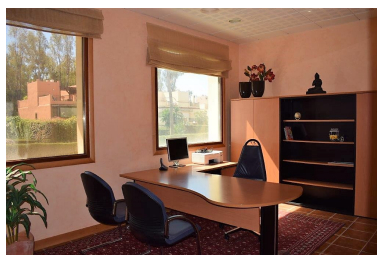
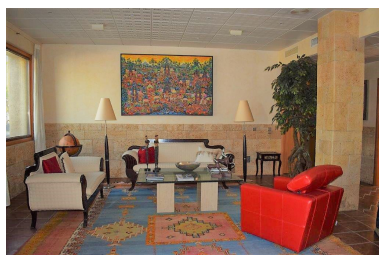


Bedrooms: 10
Status: Sale

Bathrooms: 4
Property Type: Commercial
Parking places: by request

M²: 552

Price: 1,775,000 €
Printing day : 21st July 2025



Overview:REDUCTION PRICE SINCE 1.990.000 - POSSIBILITY OF DIVIDING THE OFFICE C / U 600,000

Exclusive Opportunity business located in Av. Del Litoral, with excellent location and excellent access. The offices are located on the ground floor of the building, which is accessed by three doors located on the main facade, as well as having a fourth side entrance that gives access to an independent area. The offices are composed of: hall-entrance or main reception, second entrance hall with another reception area, meeting room, two kitchens, four toilets, file room / warehouse, 9 individual offices, 2 large offices for four positions work, a very large technical area for 4-6 work stations, a small storage room for tools and cleaning material, plus a warehouse with independent external access (located on the side of the building) where a warehouse area and another independent area are located for the central air conditioning machine. Security: The offices have an alarm installation with sensors in all their areas. All windows have 33 mm thick safety glasses installed. Computer network: System integrated in network with interconnection between all the jobs in addition to diverse machinery (photocopiers, plotter, etc.). Characteristics: Chestnut wood in the three main access doors. Windows with safety glass 33 mm thick, with Climalit system incorporated. The interior woodwork is solid wood with cherry finish, soundproofing and thermal / acoustic insulation throughout the office, TV systems located in office 1 and the second reception, fire system with smoke detectors and fire extinguishers in all rooms

Features:

None, Air conditioning, Alarm system, Parking, Resale